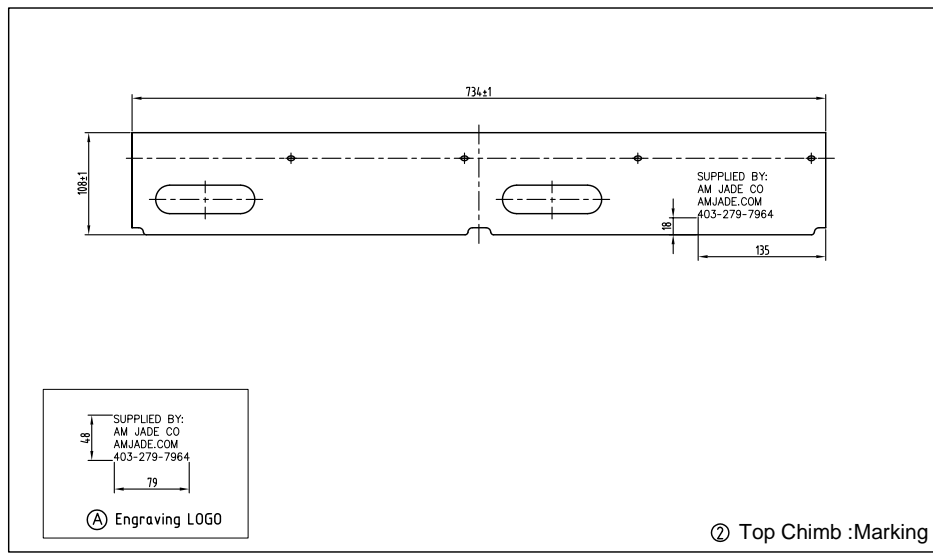


Ⓓ Keg Top Dome Lettering

Ⓕ Keg Bottom

Top Chimb Tablet Expand




Technical Requirements

No.	Item	Technical Data			Confirm		
1	Material	Top Chimb	AISI SS304	1.5±0.08mm	950-1050N/mm ²		
		Bottom Chimb	AISI SS304	1.5±0.08mm	950-1050N/mm ²		
	Body	AISI SS304	1.2±0.08mm	580-700N/mm ²			
2	Marking	LOGO	YES	Engraving	The details please see dimension Ⓐ		
		Essential information of the keg	NO				
		Container Number	NO				
3	Top Dome Lettering	Top Dome Government Warning	YES	Stamp	The details please see dimension Ⓓ		
4	Colour Band	Colour Band	NO				
5	Safety Device	Burst Disc	NO		The details please see dimension Ⓕ		
6	Neck	Material	AISI SS304	Type	RS-D-USA		
		Brand		Micro Matic			
		Type		RS-D Type With Double Circlip (700-060)			
8	Internal and external finish		Pickled and Passivated				

Notes:
 1.Capacity: 19.8L±0.15L
 2.Weight: 6.0kg±5% (Including the spear)
 3.Working pressure:3.0bar, testing pressure:6.3bar;
 4.Remove all burrs,sharp edges and swarf.

Drawing Approval:
 Signature: _____
 Date: _____

amjade.com P: 403.279.7964 F: 403.279.7951 general@amjade.com 9720 68th Street SE, Calgary AB, T2C 4Z8 Canada			
ITEM	AMENDMENTS	SIGNATURE	DATE
Drawn By	Design By	Checked By	Approved By
John Chen			
Title: Keg 1/6 Barrel ø235mm			



AM JADE CO

Material: Stainless Steel	Total: 8 Pages Weight: 6.0kg	Page 1 Unit:mm
Ref: AM JADE CO. 1/6 BBL KEG	Scale:1:8	Rev: B