

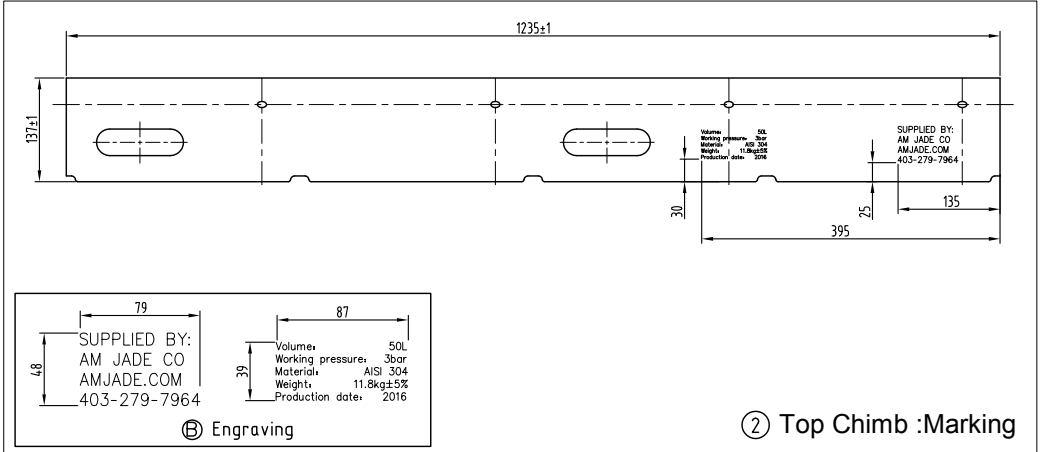
Ⓓ Keg Top Dome Lettering

Ⓕ Keg Bottom

Technical Requirements

No.	Item	Technical Data	Confirm
1	Material	Top Chimb AISI SS304 2.0±0.1mm 950-1050N/mm <sup>2</sup>	
		Bottom Chimb AISI SS304 2.0±0.1mm 650-750N/mm <sup>2</sup>	
		Body AISI SS304 1.5±0.1mm 580-700N/mm <sup>2</sup>	
2	Marking	LOGO NO	
		Essential information of the keg YES Stamp The details please see dimension Ⓓ	
3	Top Dome Lettering	Container Number NO	
		Top Dome: Government Warning YES Stamp The details please see dimension Ⓓ	
4	Colour Band	Colour Band NO	
5	Safety Device	Burst Disc NO	The details please see dimension Ⓕ
6	Neck	Material AISI SS304	Type RS-D-USA
	Extractor tube/Spear	Brand Micro Matic	Type RS-D Type With Double Circlip 700-060
8	Internal and external finish	Pickled and Passivated	

Top Chimb Tablet Expand




Ⓔ Top Chimb :Marking

- Notes:
- Capacity: 50.2L±0.2L
  - Weight: 11.8kg±5% (Excluding the spear)
  - Working pressure: 3.0bar, testing pressure: 6.3bar;
  - Remove all burrs, sharp edges and swarf.

Drawing Approval:

Signature: \_\_\_\_\_

Date: \_\_\_\_\_

				amjade.com P: 403.279.7964 F: 403.279.7951 general@amjade.com 9720 68th Street SE, Calgary AB, T2C 4Z8 Canada	
ITEM	AMENDMENTS	SIGNATURE	DATE	Title: Keg Euro 50L Barrel (Stackable)	
Drawn By	Design By	Checked By	Approved By		
John Chen					
				 <b>AM JADE CO</b>	
Material: Stainless Steel		Total: 8 Pages		Page 1	
Ref: AM JADE CO. 50 LITERS KEG		Weight: 11.8kg		Unit: mm	
				Scale: 1:10	
				Rev: F	